

Assignment Record Sheet

Math Core B

Full Name: _____

Week: 1/27-1/31

Unit Name: Variables and Patterns

Period: 2

Date Assigned	Focus Question??	Homework (IP=in packet)		Meets Expectation (15 points)	Approaching Expectations (5 points)	Below Expectation (0 points)
Monday Jan. 27	<i>What can you learn about the relationship between dependent and independent variable when looking at a rising, level, or falling graph?</i>	NO SCHOOL Teacher Work Day		WU: CW: HW:		
Tuesday Jan. 28	<i>What can you learn about the relationship between dependent and independent variable when looking at a rising, level, or falling graph?</i>	WU: Exercise 2 (IP) CW: Prob. 2.4 A-H (IP) Video Launch HW: ACE #9-11 p. 54		WU: CW: HW:		
Wed. Jan. 29	<i>What can you learn about the relationship between dependent and independent variable when looking at a rising, level, or falling graph?</i>	WU: None CW: Math Review HW: None		WU: CW: HW:		
Thursday Jan. 30	<i>What can you learn about the relationship between dependent and independent variable when looking at a rising, level, or falling graph?</i>	WU: None CW: Partner Quiz Review (IP) HW: Study for Quiz		WU: CW: HW:		
Friday Jan. 31	<i>What can you learn about the relationship between dependent and independent variable when looking at a rising, level, or falling graph?</i>	WU: None CW: Partner Quiz HW: None Turn in your packet		WU: CW: HW:		

Total Homework Score for the Week: _____/60

--	--	--	--	--	--	--

Daily Materials Score _____/20

Warm-Up

Exercise 2

2. Desi is planning a go-kart party. The prices at Kartland and at Thunder Alley are shown in the following table and graph.

Kartland Price Packages

Number of Laps Raced	10	20	30	40	50	60
Cost	\$25	\$45	\$65	\$85	\$105	\$125



- a. Find the cost at both locations for 50 laps. **Hint:** What prices does the line pass between for 50 laps?
- b. Find the cost at both locations for 20 laps.

clw

Prob. 2.4 A-H

Interpreting Graphs

Questions A–H describe pairs of related variables.

- A. The number of students who go on a school trip is related to the price of the trip for each student.

independent variable: _____

dependent variable: _____

At the right, draw or attach a graph that tells the story of how the variables are related.

What does the graph tell about the relationship of the variables? _____

Give the graph a title.

- B. When a skateboard rider goes down one side of a half-pipe ramp and up the other side, her speed changes as time passes.

independent variable: _____

dependent variable: _____

At the right, draw or attach a graph that tells the story of how the variables are related.

- C. The water level changes over time when someone fills a tub, takes a bath, and empties the tub.

independent variable: _____

dependent variable: _____

At the right, draw or attach a graph that tells the story of how the variables are related.

- D. The waiting time for a popular ride at an amusement park is related to the number of people in the park.

independent variable: _____

dependent variable: _____

At the right, draw or attach a graph that tells the story of how the variables are related.

Labsheet 2.4 Interpreting Graphs

- E. The daily profit or loss of an amusement park depends on the number of paying customers.

independent variable: _____

dependent variable: _____

At the right, draw or attach a graph that tells the story of how the variables are related.

- F. The number of hours of daylight changes over time as the seasons change.

independent variable: _____

dependent variable: _____

At the right, draw or attach a graph that tells the story of how the variables are related.

- G. The daily profit or loss of an outdoor skating rink depends on the daytime high temperature.

independent variable: _____

dependent variable: _____

At the right, draw or attach a graph that tells the story of how the variables are related.

- H. Weekly attendance at a popular movie changes as time passes from the date the movie first appears in theaters.

independent variable: _____

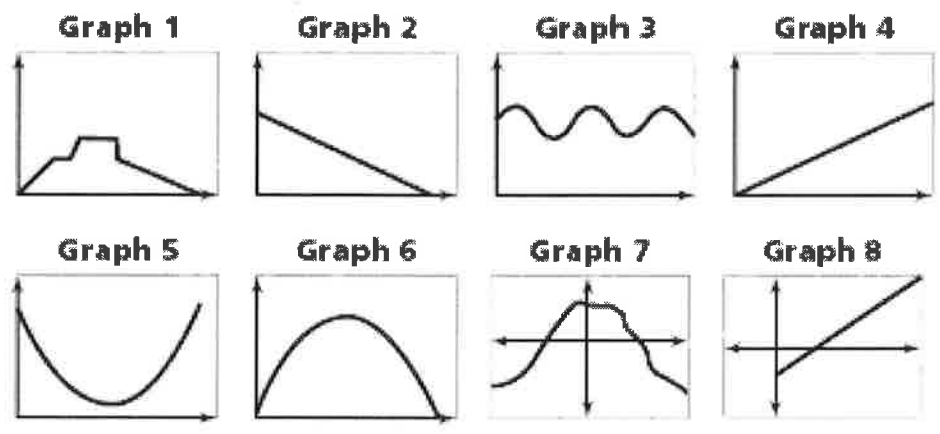
dependent variable: _____

At the right, draw or attach a graph that tells the story of how the variables are related.

clw

Labsheet 2.4

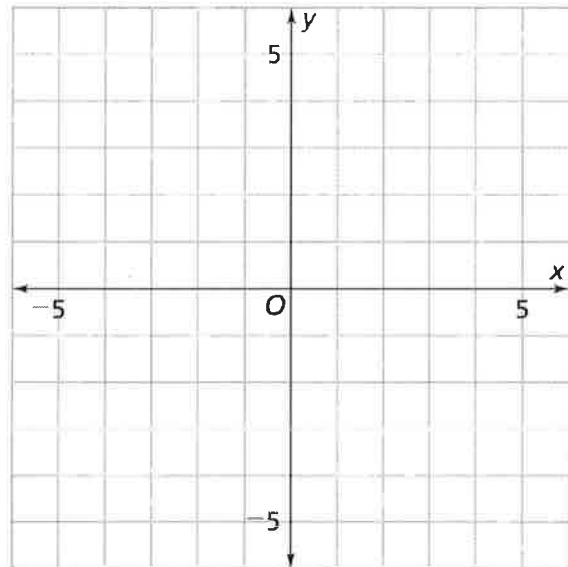
Interpreting Graphs



Partner Quiz Review for use after Investigation 2

1. Plot the following points on the grid and label each point.

- a. $(1, -3)$
- b. $(4, 0)$
- c. $(-4, 3)$
- d. $(0, -5)$
- e. $(-3, -3)$



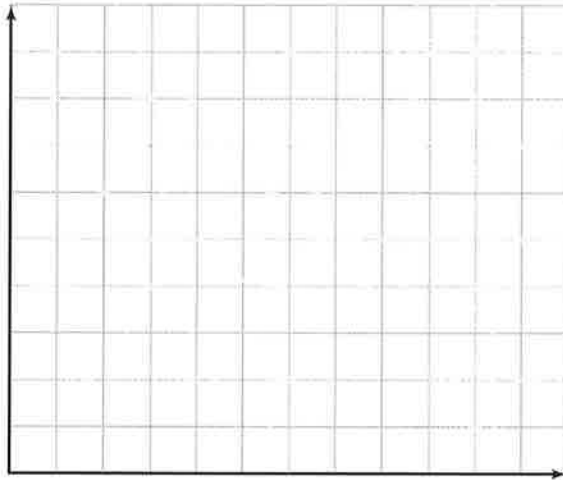
2. Read the following story carefully.

Angela and her friend Jon are going to see a movie. The theater is eight blocks from Angela's house. Jon's house is halfway between the theater and Angela's house. Angela tells Jon that she will walk over to his house. Then they will walk the rest of the way together.

- Angela leaves at 4:25 p.m. for a 5:00 p.m. show.
- It takes her 10 minutes to walk to Jon's house.
- She waits five minutes for Jon, and then they walk for two blocks.
- Jon's dog Mack runs up to them. So, they go back to Jon's house and put Mack inside.
- They are afraid of being late, so they run to get to the theater on time.
- They arrive at 4:56 p.m. They get their popcorn and watch the show.

Partner Quiz Review (continued)

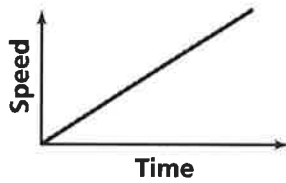
Make a table and a graph for the story. Be sure to label the independent and dependent variables on your graph and table. Also, name your graph and table.



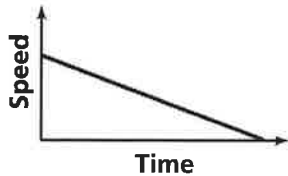
3. The three graphs below show the progress of a cyclist at different times during a ride.

For each graph, describe the rider's progress over the time interval.

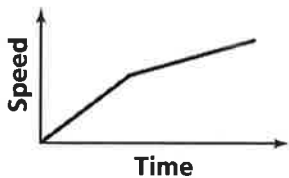
a.



b.



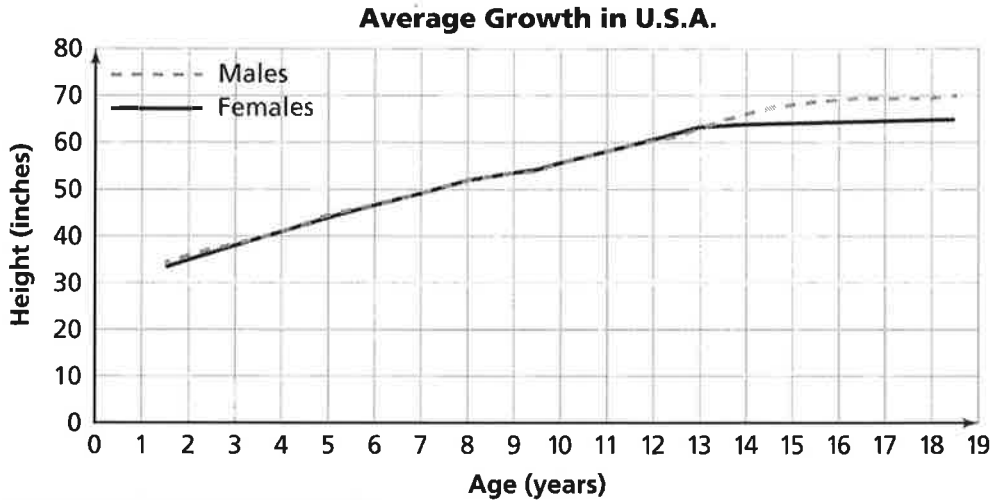
c.



Variables and Patterns

Partner Quiz Review (continued)

4. Use the table and graph to answer the questions below.



SOURCE: National Center for Health Statistics

a. According to the data on average growth of people in the United States, at what age are females taller than males?

b. Describe the pattern of growth for males from ages 13 to 19.

Age (yrs.)	Male height (in.)	Female height (in.)
2	34.5	33.5
3	37.5	37
4	40.5	39.25
5	43	42.5
6	45.5	45.5
7	48	48
8	50.5	50.5
9	52.5	52.5
10	53.5	54.5
11	56.5	56.75
12	58.75	59.5
13	61.5	62
14	64.5	63.5
15	67	63.75
16	68.5	64
17	69	64.25
18	69.25	64.5
19	69.5	64.5
20	69.5	64.5